

NOTIFICATIONS:
 FILED FOR RECORD IN
 CHEROKEE COUNTY, SC
 BRADY, J. HUBBEE
 REC. 07/24/08
 PLAT LARGE 4 PGS. 20.00
 DR Volume 4 Page 51 - 51

NOTES:
 (1) SHOWS OBJECT SET.
 (2) SHOWS EASEMENTS.
 (3) SHOWS RESTRICTIONS AND RIGHTS OF WAY OF RECORD.
 (4) SHOWS EASEMENTS AND RIGHTS OF WAY OF RECORD.
 (5) SHOWS EASEMENTS AND RIGHTS OF WAY OF RECORD.
 (6) SHOWS EASEMENTS AND RIGHTS OF WAY OF RECORD.
 (7) SHOWS EASEMENTS AND RIGHTS OF WAY OF RECORD.
 (8) SHOWS EASEMENTS AND RIGHTS OF WAY OF RECORD.
 (9) SHOWS EASEMENTS AND RIGHTS OF WAY OF RECORD.
 (10) SHOWS EASEMENTS AND RIGHTS OF WAY OF RECORD.
 (11) SHOWS EASEMENTS AND RIGHTS OF WAY OF RECORD.
 (12) SHOWS EASEMENTS AND RIGHTS OF WAY OF RECORD.
 (13) SHOWS EASEMENTS AND RIGHTS OF WAY OF RECORD.
 (14) SHOWS EASEMENTS AND RIGHTS OF WAY OF RECORD.
 (15) SHOWS EASEMENTS AND RIGHTS OF WAY OF RECORD.
 (16) SHOWS EASEMENTS AND RIGHTS OF WAY OF RECORD.
 (17) SHOWS EASEMENTS AND RIGHTS OF WAY OF RECORD.
 (18) SHOWS EASEMENTS AND RIGHTS OF WAY OF RECORD.
 (19) SHOWS EASEMENTS AND RIGHTS OF WAY OF RECORD.
 (20) SHOWS EASEMENTS AND RIGHTS OF WAY OF RECORD.
 (21) SHOWS EASEMENTS AND RIGHTS OF WAY OF RECORD.
 (22) SHOWS EASEMENTS AND RIGHTS OF WAY OF RECORD.
 (23) SHOWS EASEMENTS AND RIGHTS OF WAY OF RECORD.
 (24) SHOWS EASEMENTS AND RIGHTS OF WAY OF RECORD.
 (25) SHOWS EASEMENTS AND RIGHTS OF WAY OF RECORD.
 (26) SHOWS EASEMENTS AND RIGHTS OF WAY OF RECORD.
 (27) SHOWS EASEMENTS AND RIGHTS OF WAY OF RECORD.
 (28) SHOWS EASEMENTS AND RIGHTS OF WAY OF RECORD.
 (29) SHOWS EASEMENTS AND RIGHTS OF WAY OF RECORD.
 (30) SHOWS EASEMENTS AND RIGHTS OF WAY OF RECORD.
 (31) SHOWS EASEMENTS AND RIGHTS OF WAY OF RECORD.
 (32) SHOWS EASEMENTS AND RIGHTS OF WAY OF RECORD.
 (33) SHOWS EASEMENTS AND RIGHTS OF WAY OF RECORD.
 (34) SHOWS EASEMENTS AND RIGHTS OF WAY OF RECORD.
 (35) SHOWS EASEMENTS AND RIGHTS OF WAY OF RECORD.
 (36) SHOWS EASEMENTS AND RIGHTS OF WAY OF RECORD.
 (37) SHOWS EASEMENTS AND RIGHTS OF WAY OF RECORD.
 (38) SHOWS EASEMENTS AND RIGHTS OF WAY OF RECORD.
 (39) SHOWS EASEMENTS AND RIGHTS OF WAY OF RECORD.
 (40) SHOWS EASEMENTS AND RIGHTS OF WAY OF RECORD.
 (41) SHOWS EASEMENTS AND RIGHTS OF WAY OF RECORD.
 (42) SHOWS EASEMENTS AND RIGHTS OF WAY OF RECORD.
 (43) SHOWS EASEMENTS AND RIGHTS OF WAY OF RECORD.
 (44) SHOWS EASEMENTS AND RIGHTS OF WAY OF RECORD.
 (45) SHOWS EASEMENTS AND RIGHTS OF WAY OF RECORD.
 (46) SHOWS EASEMENTS AND RIGHTS OF WAY OF RECORD.
 (47) SHOWS EASEMENTS AND RIGHTS OF WAY OF RECORD.
 (48) SHOWS EASEMENTS AND RIGHTS OF WAY OF RECORD.
 (49) SHOWS EASEMENTS AND RIGHTS OF WAY OF RECORD.
 (50) SHOWS EASEMENTS AND RIGHTS OF WAY OF RECORD.
 (51) SHOWS EASEMENTS AND RIGHTS OF WAY OF RECORD.
 (52) SHOWS EASEMENTS AND RIGHTS OF WAY OF RECORD.
 (53) SHOWS EASEMENTS AND RIGHTS OF WAY OF RECORD.
 (54) SHOWS EASEMENTS AND RIGHTS OF WAY OF RECORD.
 (55) SHOWS EASEMENTS AND RIGHTS OF WAY OF RECORD.
 (56) SHOWS EASEMENTS AND RIGHTS OF WAY OF RECORD.
 (57) SHOWS EASEMENTS AND RIGHTS OF WAY OF RECORD.
 (58) SHOWS EASEMENTS AND RIGHTS OF WAY OF RECORD.
 (59) SHOWS EASEMENTS AND RIGHTS OF WAY OF RECORD.
 (60) SHOWS EASEMENTS AND RIGHTS OF WAY OF RECORD.
 (61) SHOWS EASEMENTS AND RIGHTS OF WAY OF RECORD.
 (62) SHOWS EASEMENTS AND RIGHTS OF WAY OF RECORD.
 (63) SHOWS EASEMENTS AND RIGHTS OF WAY OF RECORD.
 (64) SHOWS EASEMENTS AND RIGHTS OF WAY OF RECORD.
 (65) SHOWS EASEMENTS AND RIGHTS OF WAY OF RECORD.
 (66) SHOWS EASEMENTS AND RIGHTS OF WAY OF RECORD.
 (67) SHOWS EASEMENTS AND RIGHTS OF WAY OF RECORD.
 (68) SHOWS EASEMENTS AND RIGHTS OF WAY OF RECORD.
 (69) SHOWS EASEMENTS AND RIGHTS OF WAY OF RECORD.
 (70) SHOWS EASEMENTS AND RIGHTS OF WAY OF RECORD.
 (71) SHOWS EASEMENTS AND RIGHTS OF WAY OF RECORD.
 (72) SHOWS EASEMENTS AND RIGHTS OF WAY OF RECORD.
 (73) SHOWS EASEMENTS AND RIGHTS OF WAY OF RECORD.
 (74) SHOWS EASEMENTS AND RIGHTS OF WAY OF RECORD.
 (75) SHOWS EASEMENTS AND RIGHTS OF WAY OF RECORD.
 (76) SHOWS EASEMENTS AND RIGHTS OF WAY OF RECORD.
 (77) SHOWS EASEMENTS AND RIGHTS OF WAY OF RECORD.
 (78) SHOWS EASEMENTS AND RIGHTS OF WAY OF RECORD.
 (79) SHOWS EASEMENTS AND RIGHTS OF WAY OF RECORD.
 (80) SHOWS EASEMENTS AND RIGHTS OF WAY OF RECORD.
 (81) SHOWS EASEMENTS AND RIGHTS OF WAY OF RECORD.
 (82) SHOWS EASEMENTS AND RIGHTS OF WAY OF RECORD.
 (83) SHOWS EASEMENTS AND RIGHTS OF WAY OF RECORD.
 (84) SHOWS EASEMENTS AND RIGHTS OF WAY OF RECORD.
 (85) SHOWS EASEMENTS AND RIGHTS OF WAY OF RECORD.
 (86) SHOWS EASEMENTS AND RIGHTS OF WAY OF RECORD.
 (87) SHOWS EASEMENTS AND RIGHTS OF WAY OF RECORD.
 (88) SHOWS EASEMENTS AND RIGHTS OF WAY OF RECORD.
 (89) SHOWS EASEMENTS AND RIGHTS OF WAY OF RECORD.
 (90) SHOWS EASEMENTS AND RIGHTS OF WAY OF RECORD.
 (91) SHOWS EASEMENTS AND RIGHTS OF WAY OF RECORD.
 (92) SHOWS EASEMENTS AND RIGHTS OF WAY OF RECORD.
 (93) SHOWS EASEMENTS AND RIGHTS OF WAY OF RECORD.
 (94) SHOWS EASEMENTS AND RIGHTS OF WAY OF RECORD.
 (95) SHOWS EASEMENTS AND RIGHTS OF WAY OF RECORD.
 (96) SHOWS EASEMENTS AND RIGHTS OF WAY OF RECORD.
 (97) SHOWS EASEMENTS AND RIGHTS OF WAY OF RECORD.
 (98) SHOWS EASEMENTS AND RIGHTS OF WAY OF RECORD.
 (99) SHOWS EASEMENTS AND RIGHTS OF WAY OF RECORD.
 (100) SHOWS EASEMENTS AND RIGHTS OF WAY OF RECORD.

SOUTH CAROLINA
 REGISTERED PROFESSIONAL LAND SURVEYOR
 AND REGISTERED PROFESSIONAL SURVEYOR
 WITH THE REQUIREMENTS OF THE MINIMUM STANDARDS MANUAL FOR THE
 PRACTICE OF SURVEYING IN SOUTH CAROLINA AS SET FORTH THEREIN.
 THE REQUIREMENTS FOR A CLASS "A" SURVEYOR AS SET FORTH THEREIN.
 WITNESSE MY ORIGINAL SIGNATURE AND SEAL THIS 14th DAY
 OF JANUARY, 2007.
 [Signature]
 PROFESSIONAL LAND SURVEYOR
 LICENSE NUMBER: [Number]

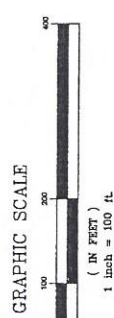
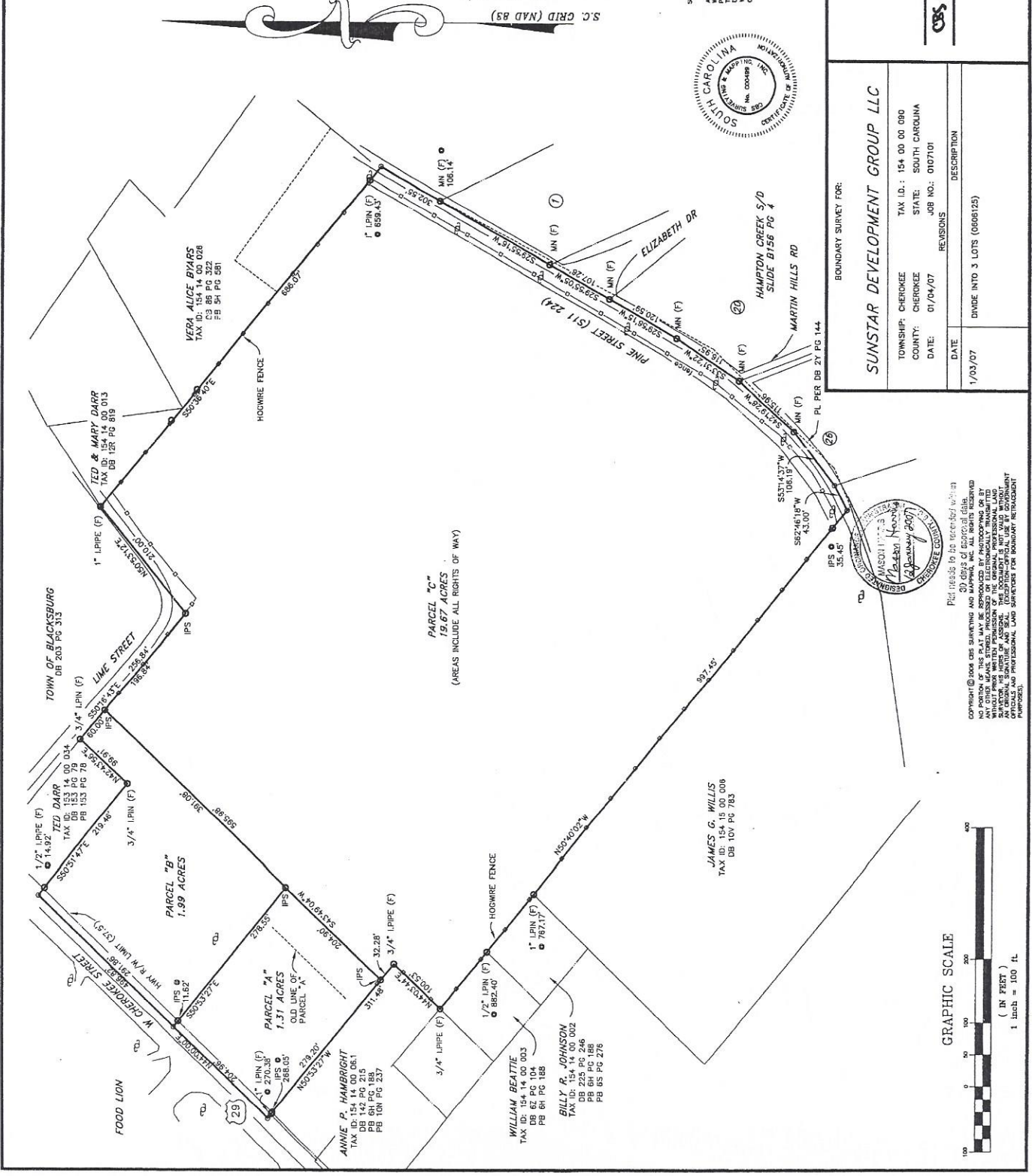
CBS Surveying & Mapping Inc.
 122 EAST ROBINSON STREET
 GAFFNEY, SC 29340 (864) 489-5068

BOUNDARY SURVEY FOR:

SUNSTAR DEVELOPMENT GROUP LLC

TOWNSHIP: CHEROKEE TAX ID.: 154 00 00 080
 COUNTY: CHEROKEE STATE: SOUTH CAROLINA
 DATE: 01/04/07 JOB NO.: 0107101
 REVISIONS

DATE	DESCRIPTION
1/03/07	DIVIDE INTO 3 LOTS (0068125)



Plat made to be recorded with
 copyright © 2008 CBS SURVEYING AND MAPPING, INC. ALL RIGHTS RESERVED.
 NO PORTION OF THIS PLAT MAY BE REPRODUCED BY PHOTOCOPYING OR BY
 ANY INFORMATION STORAGE AND RETRIEVAL SYSTEMS WITHOUT THE
 WRITTEN PERMISSION OF THE ORIGINAL PROFESSIONAL LAND
 SURVEYOR. ANY REPRODUCTION OF THIS PLAT WITHOUT THE
 WRITTEN PERMISSION OF THE ORIGINAL PROFESSIONAL LAND
 SURVEYOR AND/OR THE ORIGINAL PROFESSIONAL LAND SURVEYOR
 CONSTITUTE A VIOLATION OF THE PROFESSIONAL LAND SURVEYOR
 ACT AND MAY BE SUBJECT TO PROSECUTION FOR BOUNDARY RETRACTION
 OFFENSES.

